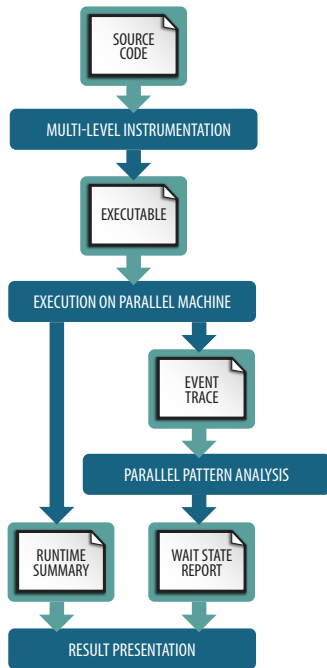


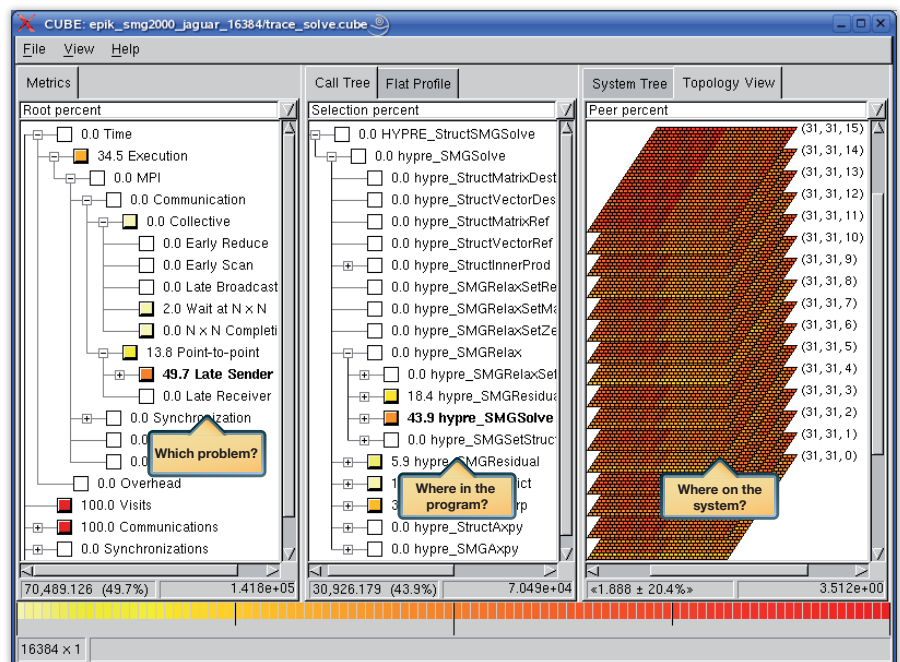
SCALASCA WORKFLOW



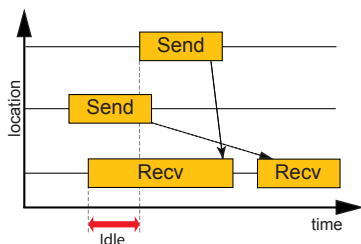
SCALASCA PERFORMANCE TOOL

- Automatically detects inefficient program behavior and highlights opportunities for performance improvement
- Classifies, ranks, and localizes performance problems in a hierarchical fashion
- Initial performance assessment based on runtime summaries
- Detailed wait-state analysis based on event traces
- Improved scalability through a replay-based parallel trace analysis algorithm
- Demonstrated its applicability on IBM Blue Gene/L and Cray XT 3/4 with up to 20,000 processes
- SCALASCA is a collaborative research project between Forschungszentrum Jülich and the University of Tennessee

RESULT PRESENTATION



EXAMPLE PATTERN



Late Sender/
Messages in Wrong Order

E-MAIL scalasca@fz-juelich.de

<http://www.scalasca.org/>